



Government of India
Ministry of Earth Sciences



India Meteorological Department

PRESS RELEASE-8

Time of issue: 1400 hours IST

Dated: 1st September, 2024

Sub: (a) Cyclonic Storm “ASNA” (pronounced as As-Na) over northwest Arabian Sea and (b) Depression lay over South Odisha and adjoining South Chhattisgarh & north Andhra Pradesh

(a) Cyclonic Storm “ASNA” (pronounced as As-Na) over northwest Arabian Sea

Yesterday’s Cyclonic Storm “ASNA” (pronounced as As-Na) over northeast & adjoining northwest Arabian Sea moved nearly westwards and lay over northwest Arabian Sea in the morning (0830 hours IST) of today, the 1st September, 2024 near latitude 23.0°N and longitude 62.3°E, 670 km west of Naliya (Gujarat), 540 km west-southwest of Karachi (Pakistan), 280 km south-southwest of Pasni (Pakistan) and 420 km east of Muscat (Oman).

It is likely to move southwestwards over northwest Arabian Sea and weaken gradually into a deep depression by evening of today, the 1st September and into a depression by morning of tomorrow, the 2nd September over the same region.

Forecast track and intensity are given in the following table:

Date/Time(IST)	Position (Lat. °N/ long. °E)	Maximum sustained surface wind speed (Kmph)	Category of cyclonic disturbance
01.09.24/0830	23.0/62.3	65-75 gusting to 85	Cyclonic Storm
01.09.24/1130	22.8/62.1	60-70 gusting to 80	Cyclonic Storm
01.09.24/1730	22.4/61.7	50-60 gusting to 70	Deep Depression
01.09.24/2330	22.0/61.4	40-50 gusting to 60	Depression
02.09.24/0530	21.6/61.1	35-45 gusting to 55	Depression

Warnings:

(i) Wind warning:

- Squally wind speed reaching 35-45 kmph gusting to 55 kmph is likely to prevail along & off Pakistan during next 12 hours.
- Squally wind speed reaching 35-45 kmph gusting to 55 kmph is likely to prevail over central parts of north Arabian Sea during next 12 hours and decrease thereafter.
- Gale wind speed reaching 65-75 kmph gusting to 85 kmph prevailing are over northwest Arabian Sea. It would gradually decrease becoming squally wind speed reaching 50-60 kmph gusting to 70 kmph by evening of 1st September and improve thereafter.
- Squally wind speed reaching 45-55 kmph gusting to 65 kmph is likely to prevail over central Arabian Sea till 2nd September morning and improve gradually thereafter.

Contact: Cyclone Warning Division, Office of the Director General of Meteorology, India Meteorological Department, Ministry of Earth Sciences, E-mail: cyclonewarningdivision@gmail.com, Website: rsmcnewdelhi.imd.gov.in, Spatial rainfall distribution: Isolated: <25%, A few: 26-50%, Many: 51-75%, Most: 76-100%, Rainfall amount (mm): Heavy rain: 64.5 – 115.5, Very heavy rain: 115.6 – 204.4, Extremely heavy rain: 204.5 or more.

- Strong wind speed reaching 30-40 kmph gusting to 50 kmph is likely along and off Gujarat, Maharashtra and Karnataka coast during next 24 hours.

(ii) Sea condition:

- High sea conditions would prevail over northwest Arabian Sea till night of 1st September and would become Very Rough to Rough till morning of 2nd September and would improve thereafter.
- Squally weather with Rough to Moderate Sea conditions are likely along & off Pakistan coast during next 12 hours.
- Very rough to rough sea conditions are likely over central parts of north Arabian Sea during next 12 hours and would improve thereafter.
- Rough sea condition is likely over adjoining westcentral Arabian Sea till 2nd September.

(iii) Fishermen warning:

Fishermen are advised not venture into

- Northwest Arabian Sea till 2nd September
- North Arabian Sea and along & off Pakistan coasts till evening of 1st September.
- Adjoining westcentral Arabian Sea till 2nd September.

(b) Depression over South Odisha and adjoining South Chhattisgarh & north Andhra Pradesh

The depression over westcentral & adjoining northwest Bay of Bengal off north Andhra Pradesh & South Odisha coasts moved northwestwards and lay over north Andhra Pradesh coast, close to southwest of Kalingapatnam in the midnight (2330 hours IST) of yesterday, 31st August, 2024. Moving further northwestwards, it crossed north Andhra Pradesh & south Odisha coasts near Kalingapatnam between 0030 and 0230 hrs IST of today, the 1st September and lay over South Odisha and adjoining South Chhattisgarh & north Andhra Pradesh in the morning (0830 hours IST) of today, the 1st September, 2024 near latitude 18.7°N and longitude 82.4°E, about 60 km southeast of Jagdalpur (Chhattisgarh), 70 km northeast of Malkangiri (Odisha), 150 km northwest of Visakhapatnam (Andhra Pradesh), 190 km west-northwest of Kalingapatnam (Andhra Pradesh) and 310 km east of Ramagundam (Telangana).

It is likely to move west-northwestwards across South Odisha, South Chhattisgarh & Vidarbha and weaken into a Well Marked Low Pressure Area during next 24 hours.

Warnings:

(i) Rainfall Warning:

South Odisha and south Chhattisgarh Light to moderate rainfall at most places with heavy rainfall at isolated places likely on 1st September.

North Andhra Pradesh: Light to moderate rainfall at most places with isolated heavy to very heavy rainfall likely during next 24 hours.

Contact: Cyclone Warning Division, Office of the Director General of Meteorology, India
Meteorological Department, Ministry of Earth Sciences, E-mail: cyclonewarningdivision@gmail.com,
Website: rsmcnewdelhi.imd.gov.in, **Spatial rainfall distribution:** Isolated: <25%, A few: 26-50%, Many: 51-75%, Most: 76-100%, **Rainfall amount (mm):** Heavy rain: 64.5 – 115.5, Very heavy rain: 115.6 – 204.4, Extremely heavy rain: 204.5 or more.

Telangana: Light to moderate rainfall at most places with isolated heavy to extremely heavy rainfall at isolated places over Telangana on 1st September and isolated heavy rainfall over north Telangana on 2nd September.

Vidarbha: Light to moderate rainfall at most places with isolated heavy to extremely heavy rainfall at a few places and extremely heavy rainfall at isolated places on 1st and 2nd September.

Marathwada: Light to moderate rainfall at most places with heavy to very heavy rainfall at isolated places on 1st and 2nd September.

East Madhya Pradesh: Light to moderate rainfall at most places with heavy to very heavy rainfall at isolated places is likely on 1st and 2nd September.

West Madhya Pradesh: Light to moderate rainfall at most places with heavy rainfall at isolated places on 1st and heavy to very heavy rainfall at isolated places on 2nd September.

Gujarat region: Light to moderate rainfall at most places with heavy rainfall at isolated places on 1st and heavy to very heavy rainfall at isolated places on 2nd September.

(ii) Wind warning:

- Squally weather with wind speed reaching 40-50 kmph gusting to 60 kmph likely over Westcentral and adjoining Northwest Bay of Bengal and along & off North Andhra Pradesh & south Odisha coasts during next 12 hours and would gradually decrease thereafter.
- Squally weather with wind speed reaching 35-45 kmph gusting to 55 kmph is likely over South Odisha, North Andhra Pradesh South Chhattisgarh and Telangana on 1st September.

(iii) Sea condition:

- Rough sea condition is very likely to prevail over Westcentral and adjoining Northwest Bay of Bengal and along & off North Andhra Pradesh & south Odisha coasts during next 12 hours.

(iv) Fishermen warning:

Fishermen are advised not to venture into

- Westcentral & adjoining northwest Bay of Bengal and along & off south Odisha and north Andhra Pradesh Coasts on 1st September.

(v) Flash Flood Guidance:

24 hours Outlook for the Flash Flood Risk (FFR) till 0530 IST of 02-09-2024 :

Moderate to High flash flood risk likely over few watersheds & neighbourhoods of following Met Sub-divisions with mentioned districts during next 24 hours.

Coastal AP & Yanam - East Godavari, Guntur, Krishna, Prakasam, Vishakhapatnam and West Godavari

Telangana - B. Kothagudem, J. Bhupalpally, Jagtial, Jangaon, Kamareddy, Khammam, Mahabubnagar, Medak, Nalgonda, Nirmal, Nizamabad, Peddapalle, Rangareddy, Sangareddy, Siddipet, Suryapet, Vikarabad, Wanaparthy, Warangal_Rural, Warangal_Urban and Y. Bhuvanagiri.

East Madhya Pradesh - Chhindwara, Narshimapura and Seoni.

Vidarbha - Akola, Amaravati, Chandrapur, Wardha and Yavatmal.

West Madhya Pradesh - Betul, Dewas, Dhar, Harda, Khandwa, Raisen, Sehore, Shajapur, Ujjain, Videsha and Hoshangabad.

Contact: Cyclone Warning Division, Office of the Director General of Meteorology, India
Meteorological Department, Ministry of Earth Sciences, E-mail: cyclonewarningdivision@gmail.com,
Website: rsmcnewdelhi.imd.gov.in, **Spatial rainfall distribution:** Isolated: <25%, A few: 26-50%, Many: 51-75%, Most: 76-100%, **Rainfall amount (mm):** Heavy rain: 64.5 – 115.5, Very heavy rain: 115.6 – 204.4, **Extremely heavy rain: 204.5 or more.**

Marathwada - Hingoli, Latur and Nanded.

Surface runoff/ Inundation may occur at some fully saturated soils & low-lying areas over Area of Concern (AoC) as shown in map due to expected rainfall occurrence in next 24 hours.

❖ **Impact Expected (Andhra Pradesh, south Odisha, south Chhattisgarh, Telangana, Vidarbha, Marathwada, Madhya Pradesh and Gujarat region)**

- Localized Flooding of roads, water logging in low lying areas and closure of underpasses mainly in urban areas of the above region.
- Breaking of tree branches.
- Occasional reduction in visibility due to heavy rainfall.
- Reduction of visibility over sea area due to sea spray induced by strong wind and heavy rainfall.
- Disruption of traffic in major cities due to water logging in roads leading to increased travel time.
- Minor damage to kutcha roads.
- Possibilities of damage to vulnerable structure.
- Localized Landslides/Mudslides/landslips/mud slips/land sinks/mud sinks.
- Damage to horticulture and standing crops in some areas due to inundation.
- It may lead to riverine flooding in some river catchments (for riverine flooding please visit Web page of CWC)

❖ **Action Suggested**

Fishermen are advised not venture into

- Northeast & adjoining eastcentral Arabian Sea off Gujarat coast and along & off Pakistan coasts during next 24 hours.
- Northwest & adjoining westcentral Arabian Sea and along & off Pakistan and southeast Iran coasts from till 2nd September.
- Westcentral & adjoining northwest Bay of Bengal and along & off south Odisha and north Andhra Pradesh Coasts during next 24 hours.
- Judicious regulation of offshore/onshore Operations
- Judicious regulation of surface transports including railways and roadways.
- Check for traffic congestion on your route before leaving for your destination.
- Follow any traffic advisories that are issued in this regard.
- Avoid going to areas that face the water logging problems often.
- Avoid staying in vulnerable structure.

❖ **Agromet Advisories for Heavy Rainfall** likely over Andhra Pradesh, south Odisha, south Chhattisgarh, Telangana, Vidarbha, Marathwada, Madhya Pradesh and Gujarat region) due to Depression

- Make provision for draining out excess water from crop fields to avoid water stagnation.
- Provide mechanical support to horticultural crops and staking to vegetables.

All associated graphics have been kept in Annexure-1. The 24 hours accumulated realised rainfall (≥ 7 cm) ending at 0830 hours IST of 1st September is kept in Annexure-2.

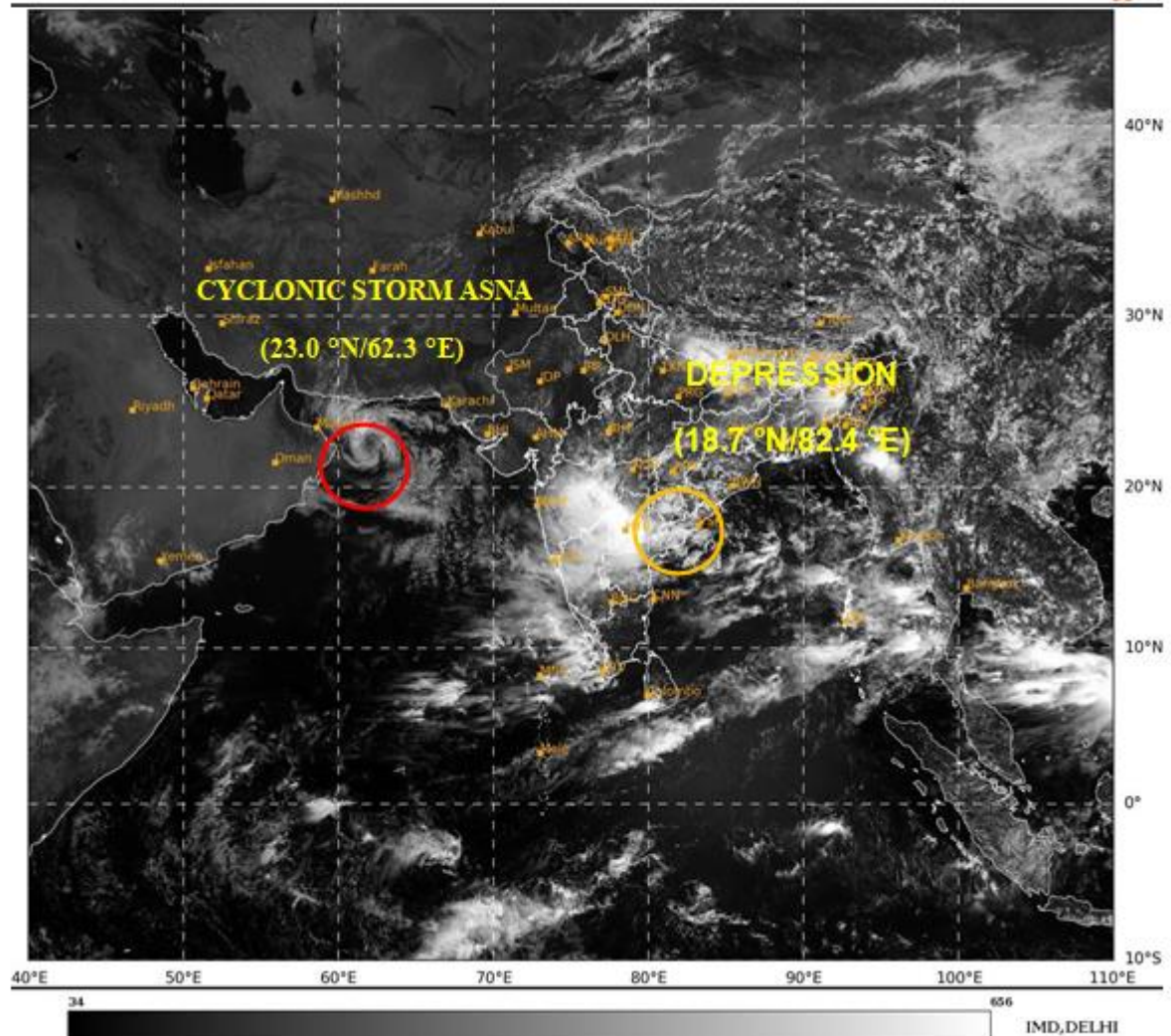
Next Press Release will be issued at 1330 hours IST of tomorrow, the 2nd September, 2024.

Contact: Cyclone Warning Division, Office of the Director General of Meteorology, India Meteorological Department, Ministry of Earth Sciences, E-mail: cyclonewarningdivision@gmail.com, Website: rsmcnewdelhi.imd.gov.in, Spatial rainfall distribution: Isolated: <25%, A few: 26-50%, Many: 51-75%, Most: 76-100%, Rainfall amount (mm): Heavy rain: 64.5 – 115.5, Very heavy rain: 115.6 – 204.4, Extremely heavy rain: 204.5 or more.

ANNEXURE – I

SAT : INSAT-3DR IMG
Visible Count 0.65 um
LIC Mercator

01-09-2024/(0515 to 0542) GMT
01-09-2024/(1045 to 1112) IST



Contact: Cyclone Warning Division, Office of the Director General of Meteorology, India Meteorological Department, Ministry of Earth Sciences, E-mail: cyclonewarningdivision@gmail.com, Website: rsmcnewdelhi.imd.gov.in, Spatial rainfall distribution: Isolated: <25%, A few: 26-50%, Many: 51-75%, Most: 76-100%, Rainfall amount (mm): Heavy rain: 64.5 – 115.5, Very heavy rain: 115.6 – 204.4, Extremely heavy rain: 204.5 or more.



OBSERVED AND FORECAST TRACK OF DEPRESSION OVER SOUTH ODISHA AND ADJOINING AREAS OF NORTH ANDHRA PRADESH AND SOUTH CHHATTISGARH BASED ON 0300 UTC (0830 IST) OF 1ST SEPTEMBER, 2024.



DATE/TIME IN UTC
 IST=UTC + 0530
 L: LOW PRESSURE AREA
 WML: WELL MARKED LOW PRESSURE AREA
 D: DEPRESSION (17-27 KT)
 DD: DEEP DEPRESSION (28-33 KT)
 CS: CYCLONIC STORM (34-47 KT)
 SCS: SEVERE CYCLONIC STORM (48-63KT)
 VSCS: VERY SEVERE CYCLONIC STORM (64-89 KT)
 ESCS: EXTREMELY SEVERE CYCLONIC STORM (90-119 KT)
 SuCS: SUPER CYCLONIC STORM (≥ 120 KT)

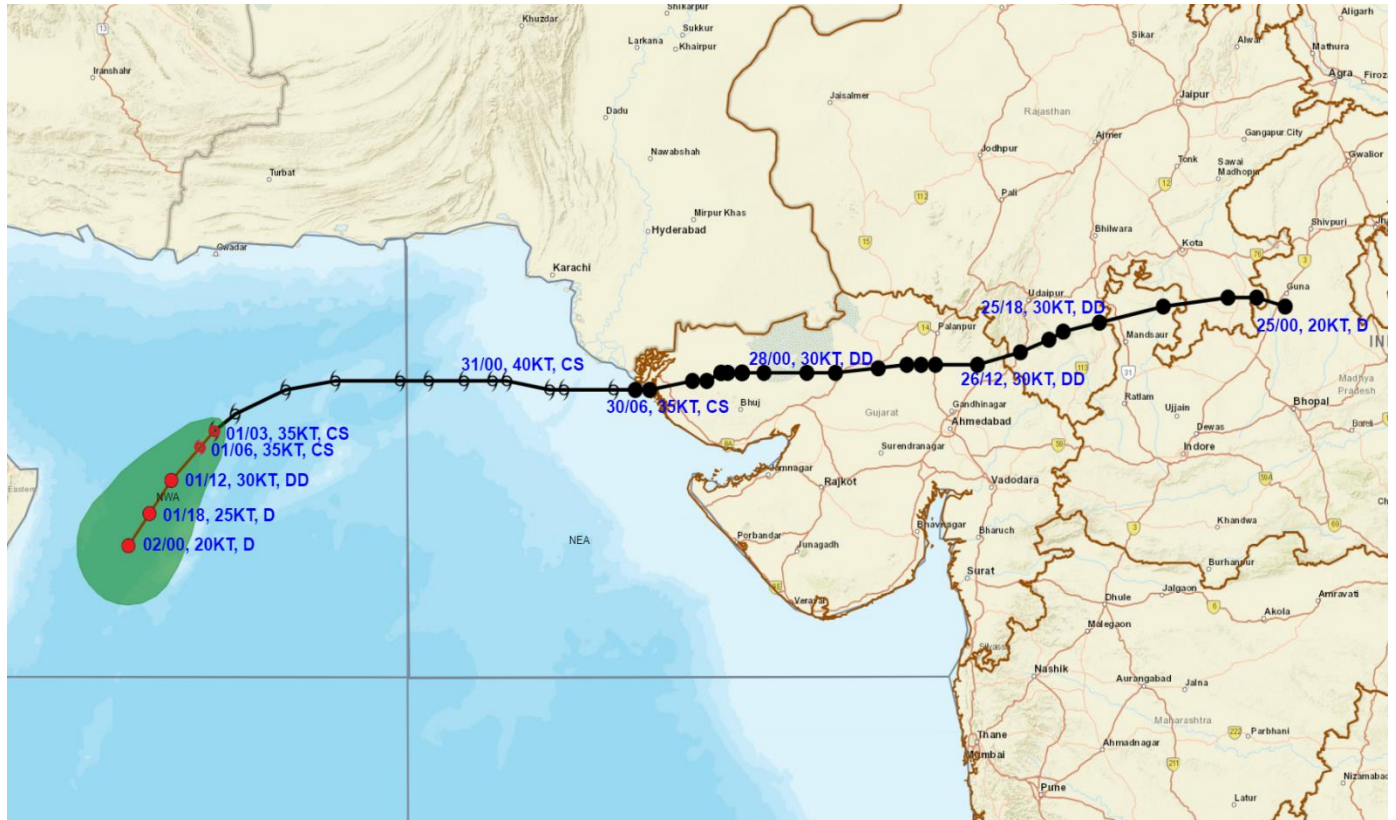
- LESS THAN 34 KT
- 34-47 KT
- ≥ 48 KT
- OBSERVED TRACK
- FORECAST TRACK
- CONE OF UNCERTAINTY

WCB: WESTCENTRAL BAY OF BENGAL
 ECB: EASTCENTRAL BAY OF BENGAL
 NWB: NORTHWEST BAY OF BENGAL

Contact: Cyclone Warning Division, Office of the Director General of Meteorology, India
 Meteorological Department, Ministry of Earth Sciences, E-mail: cyclonewarningdivision@gmail.com,
 Website: rsmcnewdelhi.imd.gov.in, Spatial rainfall distribution: Isolated: <25%, A few: 26-50%, Many:
 51-75%, Most: 76-100%, Rainfall amount (mm): Heavy rain: 64.5 – 115.5, Very heavy rain: 115.6 –
 204.4, Extremely heavy rain: 204.5 or more.



OBSERVED AND FORECAST TRACK OF CYCLONIC STORM ASNAOVER NORTHWEST ARABIAN SEABASED ON 0300 UTC (0830 IST) OF 1ST SEPTEMBER, 2024.



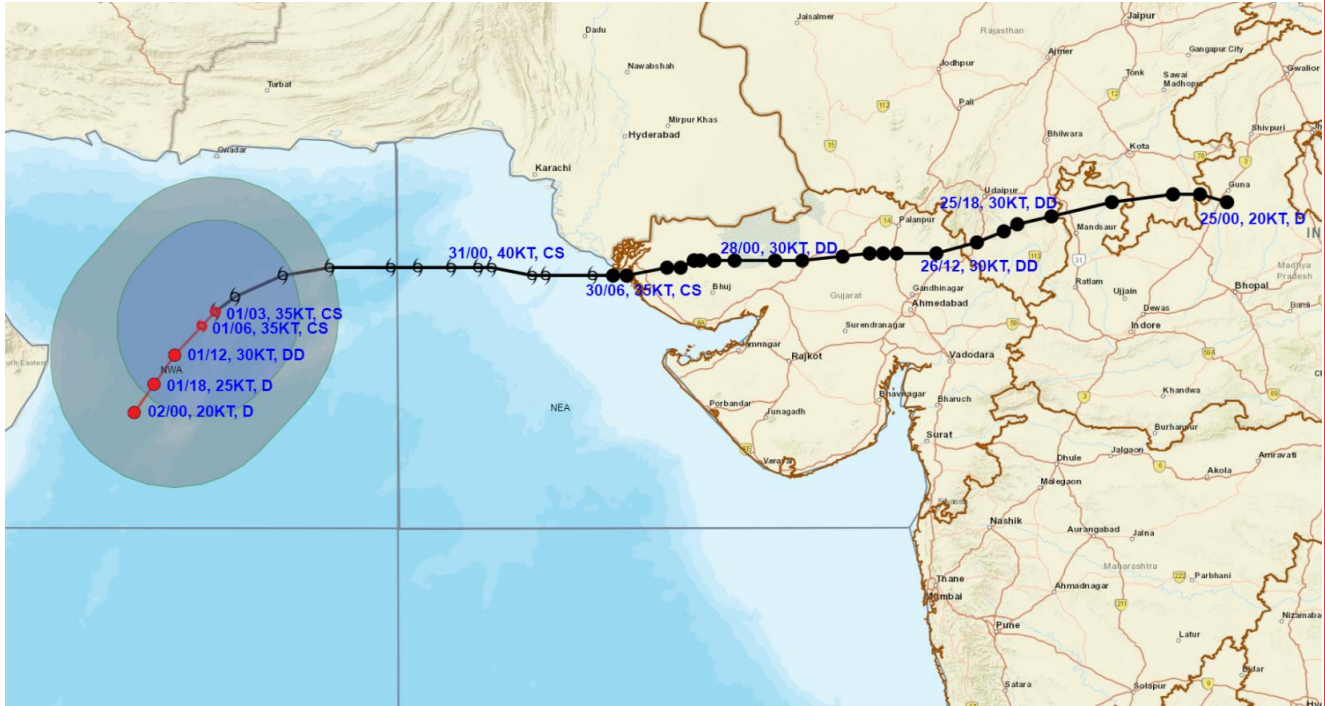
DATE/TIME IN UTC
 IST=UTC + 0530
 L: LOW PRESSURE AREA
 WML: WELL MARKED LOW PRESSURE AREA
 D: DEPRESSION (17-27 KT)
 DD: DEEP DEPRESSION (28-33 KT)
 CS: CYCLONIC STORM (34-47 KT)
 SCS: SEVERE CYCLONIC STORM (48-63KT)
 VSCS: VERY SEVERE CYCLONIC STORM (64-89 KT)
 ESCS: EXTREMELY SEVERE CYCLONIC STORM (90-119 KT)
 SuCS: SUPER CYCLONIC STORM (\geq 120 KT)

- LESS THAN 34 KT
- 34-47 KT
- \geq 48 KT
- OBSERVED TRACK
- FORECAST TRACK
- CONE OF UNCERTAINTY

Contact: Cyclone Warning Division, Office of the Director General of Meteorology, India
 Meteorological Department, Ministry of Earth Sciences, E-mail: cyclonewarningdivision@gmail.com,
 Website: rsmcnewdelhi.imd.gov.in, Spatial rainfall distribution: Isolated: <25%, A few: 26-50%, Many:
 51-75%, Most: 76-100%, Rainfall amount (mm): Heavy rain: 64.5 – 115.5, Very heavy rain: 115.6 –
 204.4, Extremely heavy rain: 204.5 or more.



OBSERVED AND FORECAST TRACK OF CYCLONIC STORM ASNA OVER NORTHWEST ARABIAN SEA BASED ON 0300 UTC (0830 IST) OF 1st SEPTEMBER, 2024.



DATE/TIME IN UTC
 IST=UTC + 0530
 L: LOW PRESSURE AREA
 WML: WELL MARKED LOW PRESSURE AREA
 D: DEPRESSION (17-27 KT)
 DD: DEEP DEPRESSION (28-33 KT)
 CS: CYCLONIC STORM (34-47 KT)
 SCS: SEVERE CYCLONIC STORM (48-63KT)
 VSCS: VERY SEVERE CYCLONIC STORM (64-89 KT)
 ESCS: EXTREMELY SEVERE CYCLONIC STORM (90-119 KT)
 SuCS: SUPER CYCLONIC STORM (≥ 120 KT)

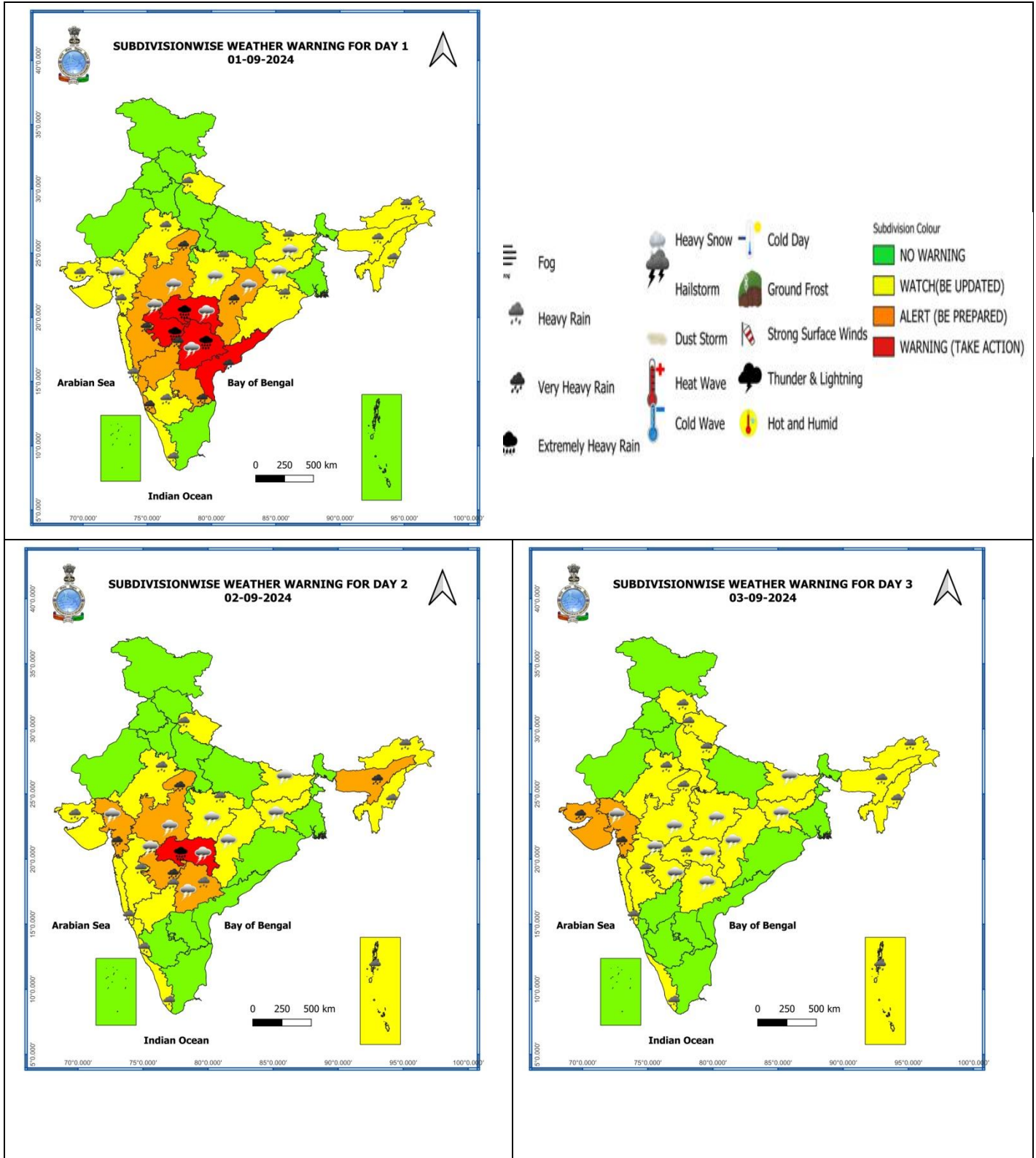
● LESS THAN 34 KT
 ○ 34-47 KT
 ○ ≥ 48 KT
 — OBSERVED TRACK
 — FORECAST TRACK
 — CONE OF UNCERTAINTY
 AREA OF MAXIMUM SUSTAINED WIND SPEED:
 ■ 28-33 KT (52-61 KMPH)
 ■ 34-49 KT (62-91 KMPH)
 ■ 50-63 KT (92-117 KMPH)
 ■ ≥ 64 KT (≥118 KMPH)

IMPACT OVER THE SEA

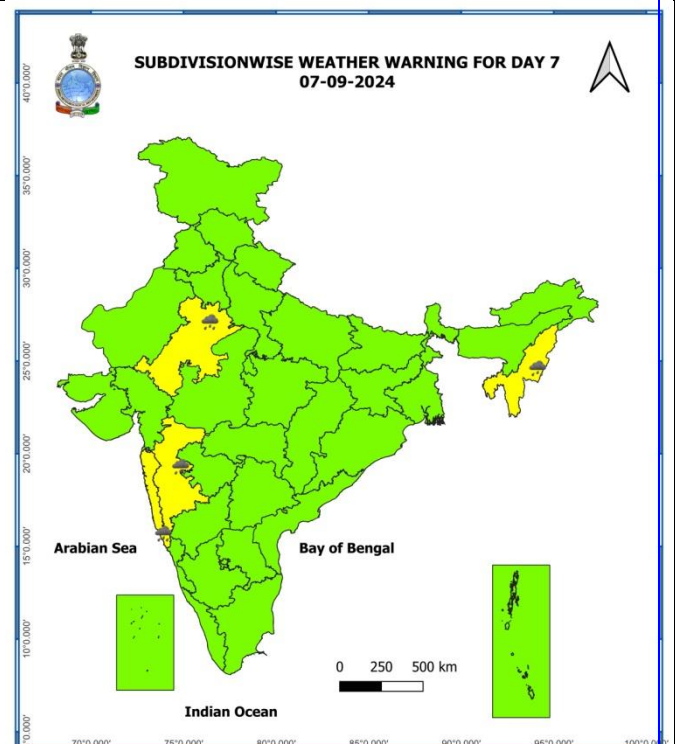
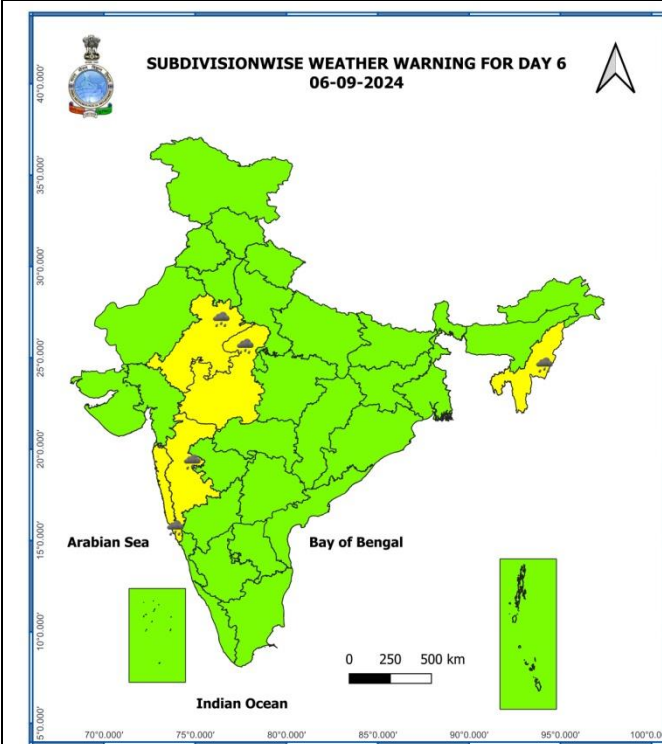
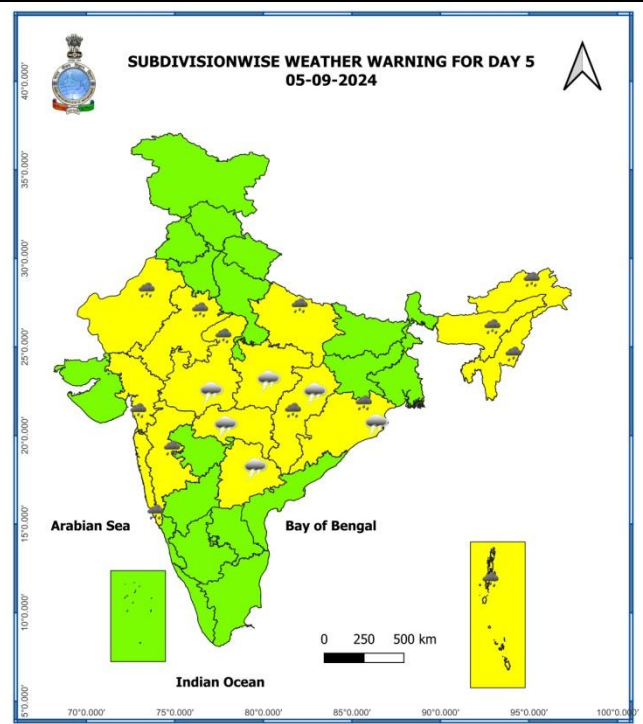
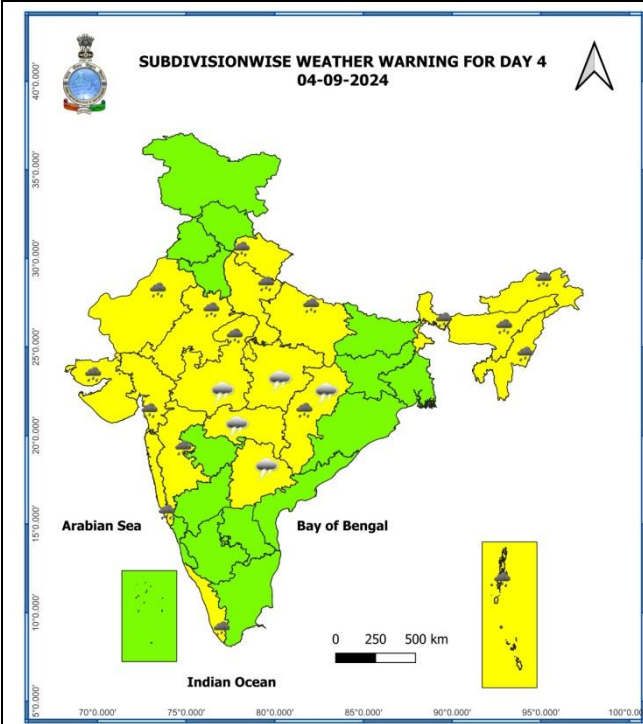
MSW (knot/kmph)	Impact	Action
28-33 (52-61)	Very rough seas	Total suspension of fishing operations
34-49 (62-91)	High to very high seas	Total suspension of fishing operations
50-63 (92-117)	Very high seas	Total suspension of fishing operations
≥ 64 (≥118)	Phenomenal	Total suspension of fishing operations

Contact: Cyclone Warning Division, Office of the Director General of Meteorology, India
 Meteorological Department, Ministry of Earth Sciences, E-mail: cyclonewarningdivision@gmail.com,
 Website: rsmcnewdelhi.imd.gov.in, Spatial rainfall distribution: Isolated: <25%, A few: 26-50%, Many:
 51-75%, Most: 76-100%, Rainfall amount (mm): Heavy rain: 64.5 – 115.5, Very heavy rain: 115.6 –
 204.4, Extremely heavy rain: 204.5 or more.

Weather Warning Graphics



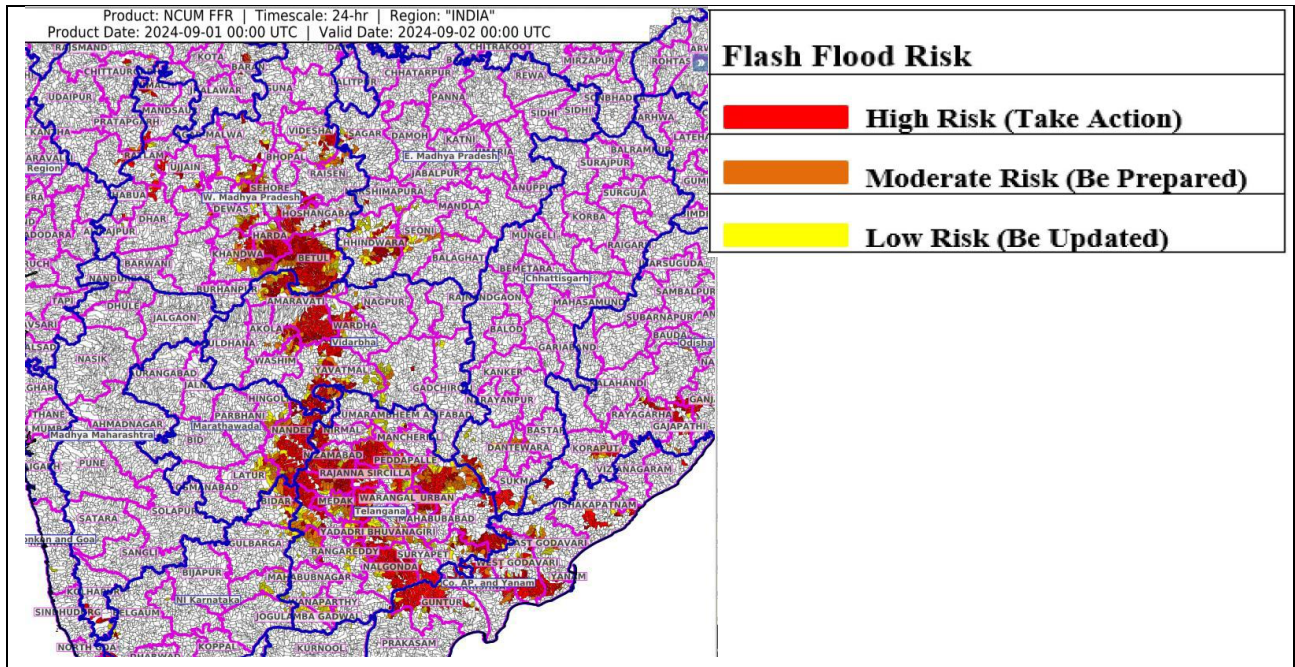
Contact: Cyclone Warning Division, Office of the Director General of Meteorology, India
Meteorological Department, Ministry of Earth Sciences, E-mail: cyclonewarningdivision@gmail.com,
Website: rsmcnewdelhi.imd.gov.in, **Spatial rainfall distribution:** Isolated: <25%, A few: 26-50%, Many: 51-75%, Most: 76-100%, **Rainfall amount (mm):** Heavy rain: 64.5 – 115.5, Very heavy rain: 115.6 – 204.4, Extremely heavy rain: 204.5 or more.



- Action may be taken based on **ORANGE AND RED** COLOUR warnings.
- Vulnerable regions likely urban and hilly areas action may be initiated for heavy rainfall warning.
- As the lead period increases forecast accuracy decreases.

Contact: Cyclone Warning Division, Office of the Director General of Meteorology, India
 Meteorological Department, Ministry of Earth Sciences, E-mail: cyclonewarningdivision@gmail.com,
 Website: rsmcnewdelhi.imd.gov.in, Spatial rainfall distribution: Isolated: <25%, A few: 26-50%, Many: 51-75%, Most: 76-100%, Rainfall amount (mm): Heavy rain: 64.5 – 115.5, Very heavy rain: 115.6 – 204.4, Extremely heavy rain: 204.5 or more.

Flash Flood Guidance



24 hours Outlook for the Flash Flood Risk (FFR) till 0530 IST of 02-09-2024 :

Moderate to High flash flood risk likely over few watersheds & neighbourhoods of following Met Sub-divisions during next 24 hours.

Coastal AP & Yanam - East Godavari, Guntur, Krishna, Prakasam, Vishakhapatnam and West Godavari districts.

Telangana - B. Kothagudem, J. Bhupalpally, Jagtial, Jangaon, Kamareddy, Khammam, Mahabubnagar, Medak, Nalgonda, Nirmal, Nizamabad, Peddapalle, Rangareddy, Sangareddy, Siddipet, Suryapet, Vikarabad, Wanaparthy, Warangal_Rural, Warangal_Urban and Y. Bhuvanagiri districts.

East Madhya Pradesh - Chhindwara, Narshimpura and Seoni districts.

Vidarbha - Akola, Amaravati, Chandrapur, Wardha and Yavatmal districts.

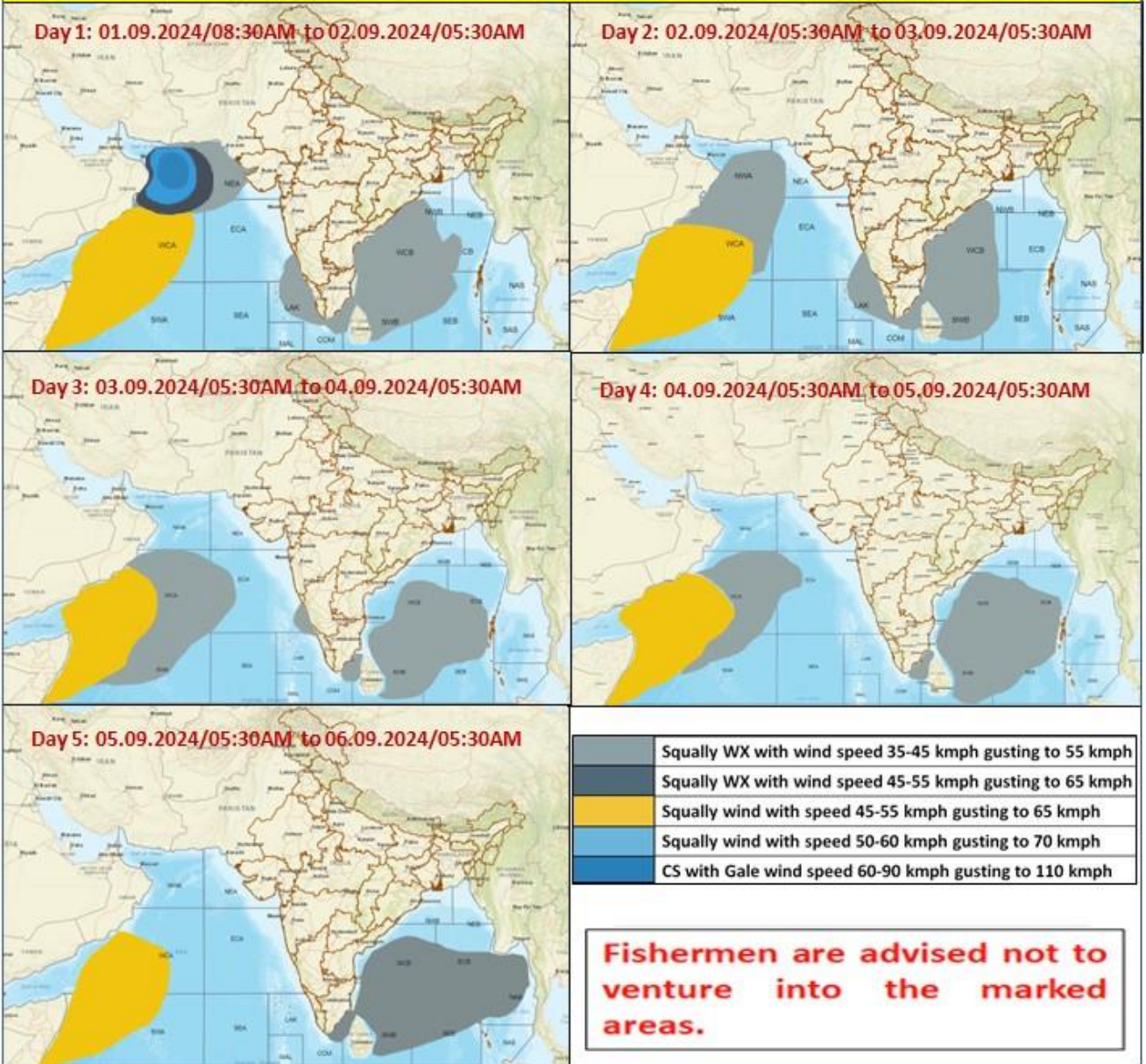
West Madhya Pradesh - Betul, Dewas, Dhar, Harda, Khandwa, Raisen, Sehore, Shajapur, Ujjain, Videsha and Hoshangabad districts.

Marathwada - Hingoli, Latur and Nanded districts.

Surface runoff/ Inundation may occur at some fully saturated soils & low-lying areas over Area of Concern (AoC) as shown in map due to expected rainfall occurrence in next 24 hours.

Contact: Cyclone Warning Division, Office of the Director General of Meteorology, India
Meteorological Department, Ministry of Earth Sciences, E-mail: cyclonewarningdivision@gmail.com,
Website: rsmcnewdelhi.imd.gov.in, **Spatial rainfall distribution:** Isolated: <25%, A few: 26-50%, Many: 51-75%, Most: 76-100%, **Rainfall amount (mm):** Heavy rain: 64.5 – 115.5, Very heavy rain: 115.6 – 204.4, Extremely heavy rain: 204.5 or more.

Fishermen Warning Graphics



Contact: Cyclone Warning Division, Office of the Director General of Meteorology, India Meteorological Department, Ministry of Earth Sciences, E-mail: cyclonewarningdivision@gmail.com, Website: rsmcnewdelhi.imd.gov.in, Spatial rainfall distribution: Isolated: <25%, A few: 26-50%, Many: 51-75%, Most: 76-100%, Rainfall amount (mm): Heavy rain: 64.5 – 115.5, Very heavy rain: 115.6 – 204.4, Extremely heavy rain: 204.5 or more.

ANNEXURE –II

Significant amount of rainfall (from 0830 hours IST of 31st August to 0830 hours IST of 1st September) (in cm):

Telangana: Mahabubabad (Mahabubabad) 37, Kodada (Suryapet) 35, Manuguru (B. Kothagudem) 32, Kusumanchi (Khammam) 32, Chilkur (Suryapet) 31, Mattampally (Suryapet) 30, Huzur Nagar (Suryapet) 30, Parvathagiri (Warangal) 29, Burgampadu (B. Kothagudem) 29, Madhira (Khammam) 28, Banswada (Kamareddy) 28, Kodakandla (Jangaon) 27, Dornakal (Mahabubabad) 26, Chinthakam (Khammam) 26, Tadwai Mlg (Mulugu) 26, Noothankal (Suryapet) 26, Gudurwrgl (Mahabubabad) 25, Palawancha (B. Kothagudem) 24, Bhadrachalam (B. Kothagudem) 23, Khammam(arg) (Khammam) 23, Aswapuram (B. Kothagudem) 22, Thollada (Khammam) 22, Sadasivanagar (Kamareddy) 21, Bonakal (Khammam) 21, Mothey (Suryapet) 20, Bhiknur (Kamareddy) 20, Chennaraopet (Warangal) 20, Jajireddigudem (Suryapet) 19, Konijerla (Khammam) 19, Suryapet (Suryapet) 19, Bayyaram (Mahabubabad) 18, Kamareddy (Kamareddy) 18, Garla (Mahabubabad) 17, Kothagudem (B. Kothagudem) 17, Wyra Kvk(agro) (Khammam) 17, Dhar Palle (Nizamabad) 16, Tadwai (Kamareddy) 16, Kothaguda (Mahabubabad) 16, Kalwakurthy (Nagarkurnool) 16, Govindaraopet (Mulugu) 15, Domakonda (Kamareddy) 15, Miryalaguda (Nalgonda) 15, Zaffergadh (Jangaon) 15, Sathupalle (Khammam) 15, Jammikunta (Karimnagar) 14, Vangoor (Nagarkurnool) 14, Tekulapalle (B. Kothagudem) 14, Devaruppal (Jangaon) 14, Achampeta (Nagarkurnool) 14, Devarakonda (Nalgonda) 14, Medak (Medak) 14, Yellandu (B. Kothagudem) 14, Thimmajipeta (Nagarkurnool) 13, Kollapur (Nagarkurnool) 13, Mustabad (Rajanna Sircilla) 9, Papannapet (Medak) 9, Midjil (Mahabubnagar) 9, Nanganur (Siddipet) 9, Mominpet (Vikarabad) 9, Maganoor (Narayanpet) 9, Velpur (Nizamabad) 9, Narmetta (Jangaon) 9, Atmakurwrgl (Hanumakonda) 9, Nawabpetmbn (Mahabubnagar) 9, Sultanabad (Peddapalle) 9, Nawabpet (Vikarabad) 9, Chigurumamidy (Karimnagar) 9, Tamsi (Adilabad) 9, Pebbair (Wanaparthi) 9, Nangnoor(arg) (Siddipet) 9, Bomraspeta (Vikarabad) 9, Nidamanur (Nalgonda) 9, Doma (Vikarabad) 9, Narayanpet (Narayanpet) 9, Boath (Adilabad) 9, Gangadhara (Karimnagar) 9, Hathanoora (Sangareddy) 9, Bachhanpet (Jangaon) 9, Kothakota (Wanaparthi) 9, Jagadevapur (Siddipet) 9, Talamadugu (Adilabad) 8, Peddamandadi (Wanaparthi) 8, Jangaon (Jangaon) 8, Kondurg (Rangareddy) 8, Yadagirigutta (Y. Bhuvanagiri) 8, Veepangandla (Wanaparthi) 8, Julapalle (Peddapalle) 8, Atmakur Wnp (Wanaparthi) 8, Ramannapeta (Y. Bhuvanagiri) 8, Nallabelly (Warangal) 8, Bazarhathnoor (Adilabad) 8, Vicarabad (Vikarabad) 8, Pargi(arg) (Vikarabad) 8, Tandur(a) (Vikarabad) 8, Wargal (Siddipet) 8, Chegunta (Medak) 8, Atmakur M (Y. Bhuvanagiri) 8, Pedda_adiserlapalle (Nalgonda) 8, Yacharam (Rangareddy) 8, Ghatkesar(a) (Rangareddy) 8, Kondapak (Siddipet) 8, Naga Reddipet (Kamareddy) 8, Maheswaram (Rangareddy) 8, Konaraopeta (Rajanna Sircilla) 8, Navipet (Nizamabad) 8, Wankdi (Kumaram Bheem) 8, Utnur (Adilabad) 8, Bhuvanagiri (Y. Bhuvanagiri) 7, Dindigul (M. Malkajgiri) 7, Narva (Narayanpet) 7, Asifabad (Kumaram Bheem) 7, Tandur (Vikarabad) 13, Huzurabad (Karimnagar) 13, Chandrugonda (B. Kothagudem) 13, Neredcherla (Suryapet) 13, Varni (Nizamabad) 13, Thimmapur (Karimnagar) 13, Shadnagar (Rangareddy) 13, Khammam Urban (Khammam) 13, Jadcherla (Mahabubnagar) 12, Kodangal (Vikarabad) 12, Kosgi (Narayanpet) 12, Yellandu(arg) (B. Kothagudem) 12, Kowdipalle (Medak) 12, Chandur (Nalgonda) 12, Bhoothpur (Mahabubnagar) 12, Gandeed (Mahabubnagar) 12, Khila Ghanpur (Wanaparthi) 12, Choppadandi (Karimnagar) 12, Karimnagar (Karimnagar) 12, Mulakalapalle (B. Kothagudem) 12, Alladurg (Medak) 11, Narsampet (Warangal) 11, Mahbubnagar (Mahabubnagar) 11, Nalgonda (Nalgonda) 11, Sangem (Warangal) 11, Khanapur (Warangal) 11, Maddur (Narayanpet) 11, Narsapur (Medak) 11, Hanwada (Mahabubnagar) 11, Lingampet (Kamareddy) 11, Damaragidda (Narayanpet) 11, Koilkonda (Mahabubnagar) 11, Julurpad (B. Kothagudem) 11, Elagaid (Peddapalle) 11,

Contact: Cyclone Warning Division, Office of the Director General of Meteorology, India
Meteorological Department, Ministry of Earth Sciences, E-mail: cyclonewarningdivision@gmail.com,
Website: rsmcnewdelhi.imd.gov.in, **Spatial rainfall distribution:** Isolated: <25%, A few: 26-50%, Many: 51-75%, Most: 76-100%, **Rainfall amount (mm):** Heavy rain: 64.5 – 115.5, Very heavy rain: 115.6 – 204.4, Extremely heavy rain: 204.5 or more.

Pochampalle (Y. Bhuvanagiri) 11, Gandhari (Kamareddy) 11, Tekmal (Medak) 11, Yellareddypeta (Rajanna Sircilla) 11, Pinapaka (B. Kothagudem) 11, Regode (Medak) 10, Wanaparthy (Wanaparthy) 10, Enkuru (Khammam) 10, Aswaraopeta (B. Kothagudem) 10, Chandurthi (Rajanna Sircilla) 10, Palakurthi (Jangaon) 10, Shankarapatnam (Karimnagar) 10, Bheemgal (Nizamabad) 10, Nagarjuna Sagar(arg) (Nalgonda) 10, Yellareddy (Kamareddy) 10, Chevella (Rangareddy) 10, Ibrahimpatnam (Rangareddy) 10, Ramayampet (Medak) 10, Gopalpet (Wanaparthy) 10, Choutuppal(arg) (Y. Bhuvanagiri) 10, Chinna Chinta Kunt (Mahabubnagar) 10, Jogipet (Sangareddy) 9, Pitlam (Kamareddy) 7, Peddemul (Vikarabad) 7, Bala Nagar (Mahabubnagar) 7, Peddapalle (Peddapalle) 7, Nagar Kurnool (Nagarkurnool) 7, Ghanpur (Jangaon) 7, Bejjanki (Siddipet) 7, Kagaznagar (Kumaram Bheem) 7, Daira(a) (Rangareddy) 7, Palem(a) (Nagarkurnool) 7, Addakal (Mahabubnagar) 7, Asifabad(arg) (Kumaram Bheem) 7, Mulug (Mulugu) 7, Raghunathpalle (Jangaon) 7, Esci_gachibowli(a) (Rangareddy) 7, Saroornagar (Rangareddy) 7, Venkatapuram (Mulugu) 7, Kondapur (Sangareddy) 7, Sirsilla (Rajanna Sircilla) 7, Sangareddy (Sangareddy) 7, Mudhole (Nirmal) 7, Kukatpally Jntu(arg) (M. Malkajgiri) 7, Marriguda (Nalgonda) 7, Utkoor (Narayanpet) 7, Venkatapur (Mulugu) 7, Nirmal (Nirmal) 7, Sarangapur (Nirmal) 7, Dubbak (Siddipet) 7, Kammar Palle (Nizamabad) 7, Kathlapur (Jagtial) 7,

Coastal Andhra Pradesh & Yanam: Amaravati (Guntur) 26, Tiruvuru (Ntr District) 26, Guntur (Guntur) 23, Kukunoor (Eluru) 20, Atchampet (Palnadu) 19, Tenali (Guntur) 18, Mangalagiri(Guntur) 17, Nandigama (Ntr District) 17, Piduguralla (Palnadu) 17, Macherla (distPalnadu) 17, Velairpad (Eluru) 16, Nuzvid (Eluru) 14, Mundlamuru (Prakasam) 14, Kunavaram (Alluri Sitharamaraju) 14, Jangamaheswarapuram (Palnadu) 13, Bapatla(Bapatla) 13, Vijayawada(arg) (Ntr District) 13, Santhamaguluru (Bapatla) 12, Vararamachandrapur (Alluri Sitharamaraju) 12, Avaniigada (Krishna) 11, Addanki (Bapatla) 11, Vijayawada A.p. (Ntr District) 11, Chintur (Alluri Sitharamaraju) 11, Karamchedu (Bapatla) 10, Kaikalur (Eluru) 9, Sattenapalle (Palnadu) 9, Repalle (Bapatla) 9, Anakapalle (Anakapalli) 8, Yelamanchili (Anakapalli) 8, Markapur (distPrakasam) 8, Chimakurthi (Prakasam) 8, Podili (Prakasam) 7, Ongole (Prakasam) 7, Gudivada (Krishna) 7,

Vidarbha: Kalamb (Yeotmal) 12, Digras (Yeotmal) 11, Deoli (Wardha) 10, Mahagaon (Yeotmal) 10, Pandherikawara (Yeotmal) 9, Umerkhed (Yeotmal) 9, Babulgaon (Yeotmal) 9, Ralegaon (Yeotmal) 9, Yeotmal (aws) (Yeotmal) 9, Zarizamni (Yeotmal) 8, Pusad (Yeotmal) 7, Arni (Yeotmal) 7, Ghatanji (distYeotmal) 7, Maregaon (Yeotmal) 7, Wani (Yeotmal) 7, Yeotmal (Yeotmal) 7,

Marathwada: Kinwat (Nanded) 18, Himayatnagar (Nanded) 17, Mahur (Nanded) 11, Hadgaon (Nanded) 9, Bhokar (Nanded) 7, Umarga (Dharashiv) 7,
Odisha: Padia (Malkangiri) 14,

Chhattisgarh: Dornapal (Sukma) 11, Konta (Sukma) 10,

East Madhya Pradesh: Harrai (Chindwara) 9, Kirnapur (Balaghat) 9,

West Madhya Pradesh: Maksudangarh (Guna) 7,

Rayalaseema: Nandikotkur (Nandyal) 9, Jupadu Bungalow (Nandyal) 9, Atmakur (Nandyal) 9, Pagidyala (Nandyal) 8,

Contact: Cyclone Warning Division, Office of the Director General of Meteorology, India
Meteorological Department, Ministry of Earth Sciences, E-mail: cyclonewarningdivision@gmail.com,
Website: rsmcnewdelhi.imd.gov.in, **Spatial rainfall distribution:** Isolated: <25%, A few: 26-50%, Many: 51-75%, Most: 76-100%, **Rainfall amount (mm):** Heavy rain: 64.5 – 115.5, Very heavy rain: 115.6 – 204.4, Extremely heavy rain: 204.5 or more.